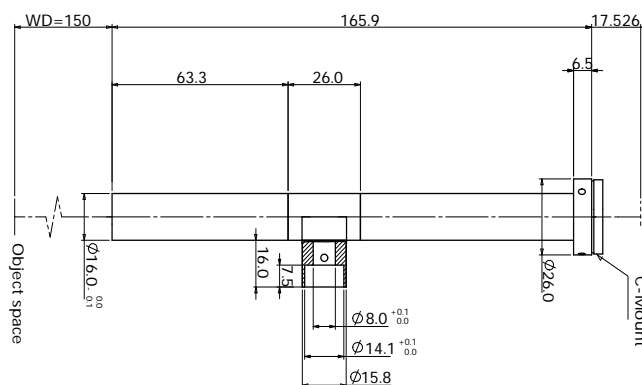


# WWL40-150C



## WWL

•	/	(x)	4.0
•	Ø16mm	WD(mm)	150
•		CCD (mm)	6.0(1/3")
•		F/#	47.9
•		NA	0.041
		(um)	8.2
		(mm)	0.2

(mm x mm)

	C	1/4" (3.2x2.4)	0.8x0.6
(mm)	172.4	1/3" (4.8x3.6)	1.2x0.9

