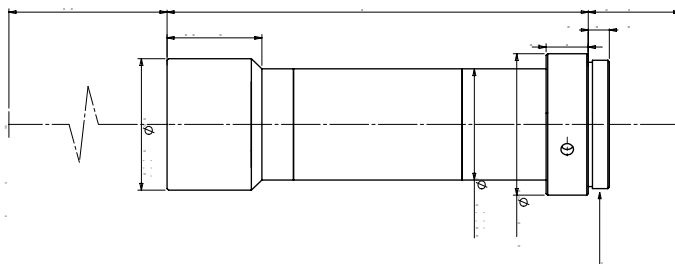


WWH10-65AT



WWH

•	/	/	(x)	1.0
•	CCD		WD(mm)	65±1
•			CCD (mm)	11(2/3")
•			F/#	11.1
•			(° max)	<0.1
•			(%)	<0.1
•			NA	0.045
			(um)	7.5
			(mm)	0.9

(mm x mm)

			1/2" (6.4x4.8)	6.4x4.8
(mm)			1/1.8" (7.13x5.37)	7.13x5.37
/	/	/	2/3" (8.8x6.6)	8.8x6.6

