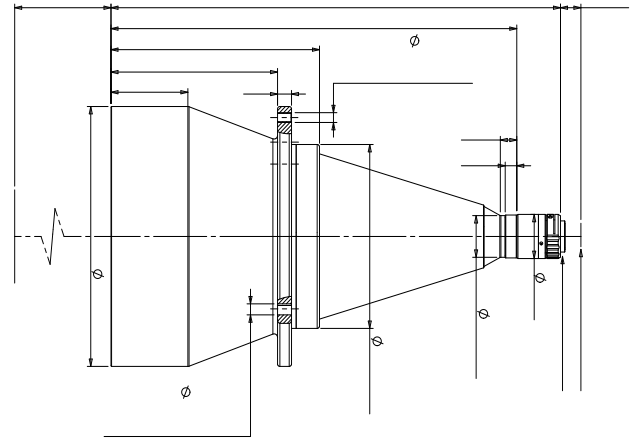


DTCM230-170-AL



26 300
1/2.5" 1.1

() 170
() 0.067
() 318±5
() 11.4(2/3")
/# 4.9
30 (/) >180
() ±98@F11
(%) <0.1
() <0.1
/ () 721±5

-170- -



170

()

()	C	1/1.8"	76 570 (7.2 5.4)	107.5 80.6
()	385.9	1/1.7"	226 (7.5 5.6)	111.9 83.6
()	6.5	2/3"	250/264 (8.45 7.1)	126.1 106.0