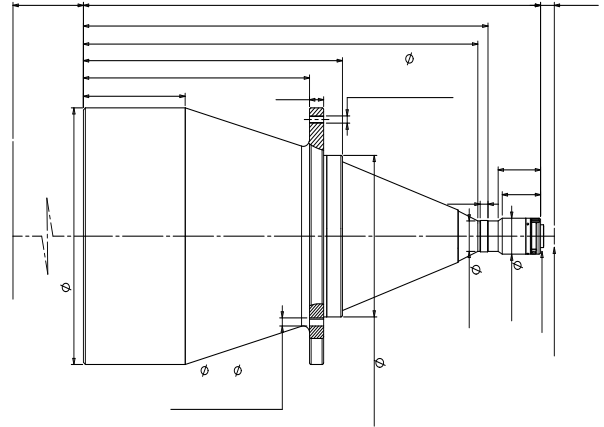


DTCM111-240H-AL



26 300
1/2.5" 1.1

() 240
() 0.077
() 410±6
() 18.4(1.1")
/# 6.2
30 (/) >150
() ±109@F16
(%) <0.1
() <0.1
/ () 1012±6

-240 - -



240

()

() C
() 584.2
() 19.2

1" 183 (13.13 8.76) 170.5x113.8
1.1" 253 (14.19 10.38) 184.3x134.8