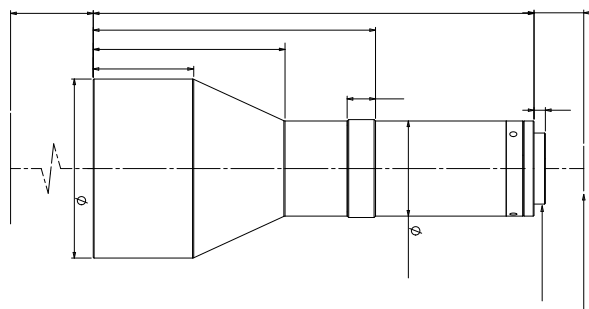


# DTCM110-48



- 
- FOV 26mm 300mm
- 1/2.5" ~ 1.1" C
- 

FOV( mm)  
(x)  
WD(mm)  
CCD ( mm)  
F/#  
MTF30 (lp/mm)  
DoF(mm)  
(% max)  
(° max)  
I/O(mm)

DTCL-48-xW-y

48mm



(mm x mm)

(mm)  
(kg)

1" PYTHON 5000(12.43x9.83)	35.9x28.4
1" IMX255(14.19x7.51)	41.0x21.7
1" IMX183(13.13x8.76)	37.9x25.3