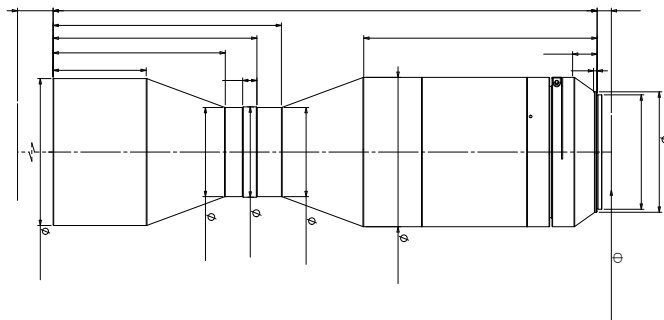


# DTCA24K-92-M95-AL

( )



DTCA ( )

• DTCA			FOV( mm)	91.6
•	24k	1.5	(x)	0.96
•			WD(mm)	150±3
•			CCD ( mm)	88
•			F/#	8.0
•			MTF30(lp/mm)	> 90
•			DoF(mm)	±0.3@ F8.0
			(% max)	<0.1
			(° max)	<0.1
			I/O(mm)	621±3

(mm)	M95
kg	458.5
	6.0

(mm x mm)

DALSA 86M (64.32x48.38)	67.0x50.4
Linescan-16K 5µm (81.9mm)	85.3
Linescan-24K 3.5µm (86.0mm)	89.6

